

CATALOG 2022

POWERMIX

Plastering Machines & Rotor Stator Systems



Powermix Technology Publications

2022

POWERMIX PLASTERING MACHINES

PRODUCT CODE: PMP0001

PLUS POWERMIX

PRODUCT DESCRIPTION

POWERMIX PLUS is 3phase continues plaster mixing pump machine with very high capacity which is suitable for spraying premixed gypsum, lime and cement based plasters, glues, colored plasters, stuccoes and finishing coats. It is the best economic option and comes with standard machine equipment.

PRODUCT SPECIFICATIONS

- High Mixing Quality
- Easy to disassemble and transport
- Best Economic Option
- 1 Year Warranty

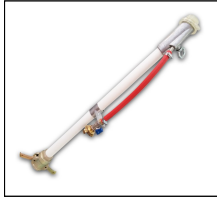
TECHNICAL DATA

Power Supply: Three Phase 400V-50Hz
Mixer Motor: 5,5 kW, 396rpm
Drive Motor: 0.55kW, 28rpm
Water Pump: 0.75 kW-1.0hp
Compressor Capacity: 250 lt/min- 5.5 bar
Output Rate: Max. 40 lt/min *
Max. Hor. Conveying Distance: 40m*
Hopper Volume: 130 lt
Maximum Weight: 285 kg

* Those variables are not standard, depending on the characteristics of materials, the type of mixer motor, air compressor and rotor&stator can be changed.



STANDARD MACHINE EQUIPMENT



CE

POWERMIX PLASTERING MACHINES

PRODUCT CODE: PMP0002

ALPHA POWERMIX

PRODUCT DESCRIPTION

POWERMIX ALPHA is 3phase continues plaster mixing pump machine with very high capacity which is suitable for spraying premixed gypsum, lime and cement based plasters, glues, colored plasters, stuccoes and finishing coats. It introduces the high technology to construction sector with ergonomic design and high performance. It is the best option for top performance.

PRODUCT SPECIFICATIONS

- High Mixing Quality
- Easy to Disassemble and Transport
- Best Option for Top Performance
- 1 Year Warranty

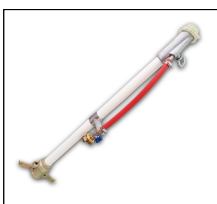
TECHNICAL DATA

Power Supply: Three Phase 400V-50Hz
Mixer Motor: 5,5 kW, 396rpm
Drive Motor: 0.55kW, 28rpm
Water Pump: 0.75kW-1.0hp
Compressor Capacity: 250 lt/min- 5.5 bar
Output Rate: Max. 40 lt/min *
Max. Hor. Conveying Distance: 40m*
Hopper Volume: 130 lt
Maximum Weight: 285 kg

* Those variables are not standard, depending on the characteristics of materials, the type of mixer motor, air compressor and rotor&stator can be changed.



STANDARD MACHINE EQUIPMENT



POWERMIX PLASTERING MACHINES

PRODUCT CODE: PMP0003

EURO POWERMIX

PRODUCT DESCRIPTION

POWERMIX EURO is 3phase continues plaster mixing pump machine with very high capacity which is suitable for spraying premixed gypsum, lime and cement based plasters, glues, colored plasters, stuccoes and finishing coats. It introduce European standards to the sector with German mixer motor, German electrical equipments, pressure switches & reducers and italian water pump. It is the best option for top

PRODUCT SPECIFICATIONS

- High Mixing Quality
- Easy to Disassemble and Transport
- High European Quality Spare Parts
- 1 Year Warranty

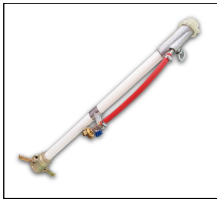
TECHNICAL DATA

Power Supply: 400V- 50Hz
Mixer Motor: NORD-5.5 kW, 385rpm
Drive Motor: 0.55kW, 28rpm
Water Pump: 0.75 kW-1.0hp
Compressor Capacity: 250lt/min
Output Rate: Max. 40 lt/min *
Max. Hor. Conveying Distance: 40m*
Hopper Volume: 130 lt
Maximum Weight: 285 kg

* Those variables are not standard, depending on the characteristics of materials, the type of mixer motor, air compressor and rotor&stator can be changed.



STANDARD MACHINE EQUIPMENT



CE

PRODUCT CODE: PMP0004

MONO POWERMIX

PRODUCT DESCRIPTION

POWERMIX MONO is single phase, continues mixing and spraying pump machine with very high capacity which is suitable for plastering premixed gypsum, lime and cement based plasters, glues, colored plasters, stuccoes and finishing coats. Due to it can be operated with 220V residential electricity it is perfect option for construction works in residential areas.

PRODUCT SPECIFICATIONS

- High Mixing Quality
- Easy to Disassemble and Transport
- Operated with 220V/230V Residential Electricity
- 1 Year Warranty

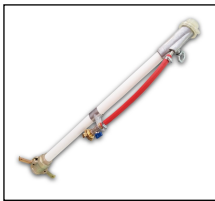
TECHNICAL DATA

Power Supply: 230V- 50Hz
Mixer Motor: 4 kW, 357rpm
Drive Motor: 0.55kW, 28rpm
Water Pump: 0.37 kW-0.50hp
Compressor Capacity: 205lt/min- 4.5bar
Driver: YASKAWA
Output Rate: 5-20 lt/min *
Max. Hor. Conveying Distance: 30m*
Hopper Volume: 130 lt
Maximum Weight: 285 kg

* Those variables are not standard, depending on the characteristics of materials, the type of mixer motor, air compressor and rotor&stator can be changed.



STANDARD MACHINE EQUIPMENT



POWERMIX PLASTERING MACHINES

CODE: RD6001



POWERMIX D 6-3 ROTOR

- Flow Rate 22lt/min, 400 rpm
- Alloy tool steel

CODE: SD6001



POWERMIX D 6-3 STATOR

- Flow Rate 22lt/min, 400 rpm
- Grain size max 3mm

CODE: SD6002



D 6-3 STATOR (ORANGE)

- Flow Rate 22lt/min, 400 rpm
- Grain size max 3mm

CODE: RD7001



POWERMIX D 7-2.5 ROTOR

- Flow Rate 27lt/min, 400 rpm
- Alloy tool steel

CODE: SD7001



POWERMIX 7-2.5 STATOR

- Flow Rate 27lt/min, 400rpm
- Grain size max 3mm

CODE: SD7002



D 7-2.5 STATOR (BLUE)

- Flow Rate 27lt/min, 400 rpm
- Grain size max 3mm

CODE: RD8001



POWERMIX D 8-2 ROTOR

- Flow Rate 32lt/min, 400 rpm
- Alloy tool steel

CODE: SD8001



POWERMIX D 8-2 STATOR

- Flow Rate 32lt/min, 400rpm
- Grain size max 3mm

CODE: SD8002



D 8-2 STATOR (GRAY)

- Flow Rate 32lt/min, 400rpm
- Grain size max 3mm

POWERMIX PLASTERING MACHINES

CODE: RB4001



POWERMIX B4-1.5L ROTOR

- Flow Rate 6-10lt/min, 200/400 rpm
- Alloy tool steel

CODE: SB4001



POWERMIX B4-1.5L STATOR

- Flow Rate 6-10lt/min, 200/400 rpm
- Grain size max 2mm

CODE: SB4002



B4-1.5L STATOR (PAINTED)

- Flow Rate 6-10lt/min, 200/400rpm
- Grain size max 2mm

CODE: RB4003



POWERMIX B4-2L ROTOR

- Flow Rate 6-10lt/min, 200/400 rpm
- Alloy tool steel

CODE: SB4004



POWERMIX B4-2L STATOR

- Flow Rate 6-10lt/min, 200/400 rpm
- Grain size max 2mm

CODE: SB4005



B4-2L STATOR (PAINTED)

- Flow Rate 6-10lt/min, 200/400 rpm
- Grain size max 2mm

CODE: RD6M001



POWERMIX D 6 MONO ROTOR

- Flow Rate 20lt/min, 400 rpm
- Alloy tool steel

CODE: SD6M001



POWERMIX D6 MONO STATOR

- Flow Rate 20lt/min, 400rpm
- Grain size max 3mm

CODE: SD6M002



D 6 MONO STATOR (PAINTED)

- Flow Rate 20lt/min, 400rpm
- Grain size max 3mm

POWERMIX PLASTERING MACHINES

CODE: HHK0007



AIR COMPRESSOR 400V

- 5.5 bar, 400V, 3Phase
- Made in Turkey

CODE: HHK0008



METAL FRAME

- Right and Left metal frame of air compressor

CODE: HHK0009



LID OF BOTTOM DIAPHRAGM

- Lid of bottom diaphragm for Air Compressor

CODE: HHK0010



LID OF UPPER DIAPHRAGM

- Lid of upper diaphragm for Air Compressor

CODE: HHK0011



LEVER OF PISTON

- Lever of piston of Air Compressor

CODE: HHK0012



FILTER HOUSING

- Filter Housing of Air Compressor

CODE: HHK0013



LID OF FILTER

- Lid of filter of Air Compressor

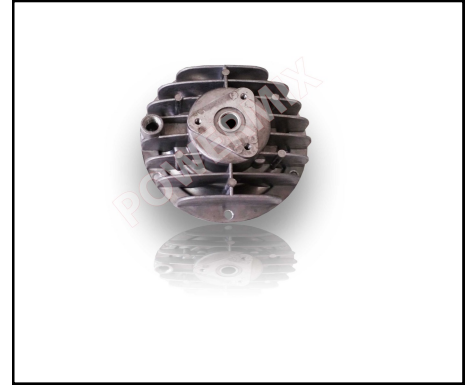
CODE: HHK0014



COMPRESSOR HANDLE

- Handle of Air Compressor

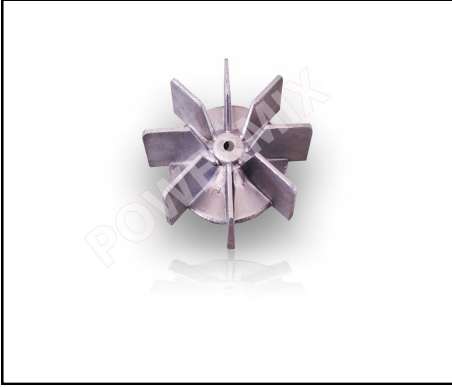
CODE: HHK0015



COMPRESSOR HEAD

- Upper lid of Air Compressor

CODE: HHK0016



COMPRESSOR FAN

- Fan of Air Compressor

CODE: HHK0017



COMPRESSOR MEMBRANE

- Membrane of Air Compressor

CODE: HHK0018



COMPRESSOR FILTER

- The filter of Air Compressor

CODE: HHK0019



SAFETY VALVE

- Safety valve of Air Compressor

CODE: HHK0020



CONNECTION SOCKET

- Connection Socket for Air Compressor

CODE: HHK0021



MOTOR PROTECTION

- Motor protection of Air Compressor

CODE: HHK0022



AIR COMPRESSOR 230V

- 2.2 bar, 230V, Single Phase
- Including repair kit

CODE: HHK0023



AIR COMPRESSOR 230V

- 4 bar, 230V, Single Phase
- Including repair kit

CODE: HHK0024

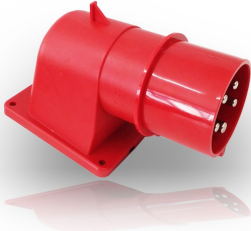


AIR COMPRESSOR 230V

- 4.5 bar, 230V, Single Phase
- Including repair kit

POWERMIX PLASTERING MACHINES

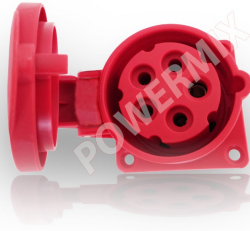
CODE: ELM0012



ANGLED MACHINE PLUG

- 5P, 32 A

CODE: ELM0013



MIXER PLUG

- 5P, 16 A

CODE: ELM0014



AIR COMPRESSOR PLUG

- 4P, 16A

CODE: ELM0015



CONNECTOR PLUG

- 5P, 32 A
- with tightening head

CODE: ELM0016



CONNECTOR PLUG(RUBBER)

- 4P, 25A

CODE: ELM0017



CONNECTOR PLUG

- 5P, 16A

CODE: ELM0018



CONNECTOR PLUG

- 4P, 16A

CODE: ELM0019



TRANSFORMER

- Input 230 Volt or 380 Volt
- Output 24 Volt or 42 Volt

CODE: ELM0020



CONTACTOR DIL EM 10

- 4 kW
- 24 Volt or 42 Volt

POWERMIX PLASTERING MACHINES

CODE: ELM0021



CONTACTOR DIL EM 17-10

- 7,5 kW
- 24 Volt or 42 Volt

CODE: ELM0022



MOTOR PROTECTION

- Motor Protection Switch
- PKZM0 2.5
- 1.6 A or 2.5 A

CODE: ELM0023



MOTOR PROTECTION

- Motor Protection Switch
- PKZM0 16
- 10 A or 16 A

CODE: ELM0024



PHASE FAILURE DEVICE

- 380 Volt,
- 3 P, 8 A

CODE: ELM0025



TIMER

- 24 Volt

CODE: ELM0026



VOLTMETER

- 380 Volt

CODE: ELM0027



MAIN SWITCH

- 3 P, 25 A

CODE: ELM0028



POLE CHANGEOVER SWITCH

- 3 P, 25 A

CODE: ELM0029



POLE CHANGEOVER SWITCH

- 3 P, 20 A

POWERMIX PLASTERING MACHINES

CODE: ELM0030



MAIN INVERTER SWITCH

- 32A, Three Phase

CODE: ELM0031



CONTACT SWITCH

- Contact Switch for Drive Motor
and Water Pump
- 230 Volt

CODE: ELM0032



START-STOP BUTTON

- NC NO Contact
- 230Volt

CODE: ELM0033



STOP BUTTON

- 250 Volt, 4 A
- EATON Made in Germany

CODE: ELM0034



MANUAL WATER BUTTON

- 250 Volt, 4 A
- EATON Made in Germany

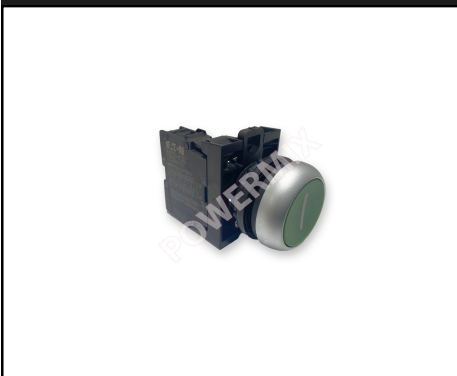
CODE: ELM0035



REVERSE BUTTON

- 250 Volt, 4 A
- EATON Made in Germany

CODE: ELM0036



START BUTTON

- 250 Volt, 4 A
- EATON Made in Germany

CODE: ELM0037



ORANGE LED LIGHT

- Wrong direction error led light
- 24Volt

CODE: ELM0038



GREEN LED LIGHT

- Under operation led light
- 24Volt

POWERMIX PLASTERING MACHINES

CODE: ELM0039



RED BUZZER LIGHT

- Error Alert
- 24Volt

CODE: ELM0040



EMERGENCY STOP BUTON

- 250 Volt, 4 A

CODE: ELM0041



B1 & B2 CONTACT

- NC Contact
- NO Contact
- EATON Made in Germany

CODE: ELM0042



ELECTRIC CABLE 5X4

- 5x4 Core
- 25 meter
- 50 meter

CODE: ELM0043



FUSE CAP

- Fuse Cap for Transformer

CODE: ELM0044



0.5 Amper



15 Amper

FUSE OF TRANSFORMER

- 0.5Amper or 15Amper
- 230Volt

CODE: ELM0055



ELECTRIC CABLE 3X4

- 3x4 Core
- 25 meter

CODE: ELM0057



ANGLED MAIN PLUG_230V

- 3P, 32 A

CODE: ELM0070



PANEL PLUG_230V

- 2P, IP 44

POWERMIX PLASTERING MACHINES

CODE: ELM0052



MIXER PLUG 6X6_FEMALE

- 6x16 Female
- 380Volt

CODE: ELM0053



MIXER PLUG 6X6 MALE

- 6x16 Female
- 380Volt

CODE: ELM0061



DRIVER YASKAWA V1000

- Max. App. 5.5kW/4.0kW
- Made in Japan

CODE: ELM0062



R3 FINDER RELAY SET

- 24V/42V, 6A

CODE: ELM0063



R1 FINDER RELAY SET

- 24V/42V, 10A

CODE: ELM0067



POTENTIOMETER

- Potentiometer Switch
- 230Volt

CODE: BSA0009



PRESSURE SWITCH

- MDR F 4H-S, 3/8", 0.07 - 4 bar
- Condor-Made in Germany,

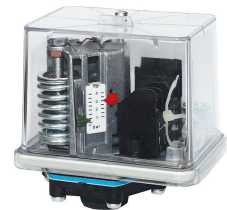
CODE: BSA0010



PRESSURE SWITCH

- 0.07 - 4 bar / 1/4"
- Eaton-Made in Germany

CODE: BSA0011



PRESSURE SWITCH

- FF4-4 DAH V, 0.07 - 4 bar
- Tival-Made in Germany

POWERMIX PLASTERING MACHINES

CODE: BSA0012



PRESSURE SWITCH PNAMEK

- NC NO

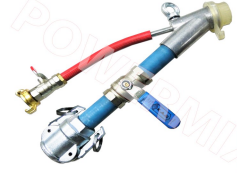
CODE: BSA0013



PRESSURE SWITCH ITALTEC

- 250V, 16A
- 1.5-5 bar

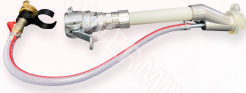
CODE: PST0026



SPRAY GUN-SHUT OFF

- PVC, 25mm \varnothing , 45cm long
- Spray gun with shut off valve

CODE: PST0027



STRAIGHT SPRAY GUN

- PVC, 25mm \varnothing , 45cm long
- Straight spray head

CODE: PST0028



STRAIGHT SPRAY HEAD

- 25mm diameter straight
- Aluminum

CODE: PST0029



SPRAY HEAD SET

- 25mm straight spray head,
12mm nozzle, screw, blowing
pipe

CODE: PST0030



S. GUN AIR CONNECTION

- Air valve, geKa coupling, hose-
blowing pipe

CODE: PST00031



SPRAY HEAD SET 35MM

- 35mm spray head, 18mm spray
nozzle, screw, blowing pipe

CODE: PST00032



SPRAY GUN 35MM

- 50cm length, 35mm \varnothing
- Aluminum pipe with handle

POWERMIX PLASTERING MACHINES

CODE: PST0033



SPRAY GUN 35MM-SHORT

- 45cm length, 35mm Ø
- Aluminum

CODE: PST0034



SPRAY GUN 25MM

- 70cm length, 25mm Ø
- Cranked spray head

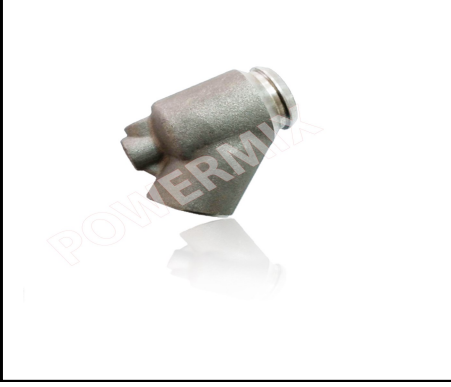
CODE: PST0035



CRANKED SPRAY HEAD

- Aluminum, 25mm Ø
- 30 degree angle

CODE: PST0036



SPRAY HEAD 35MM

- Aluminum, 35mm Ø

CODE: PST0037



SPRAY HEAD SET

- 25mm spray head, 14 mm Ø nozzle, screw and blowing pipe

CODE: PST0038



SPRAY NOZZLE

- Conic or standard shape
- Colours blue/white/black/red
- 10/12/14mm Ø

CODE: PST0039



SPRAY NOZZLE 18MM

- 18mm Ø

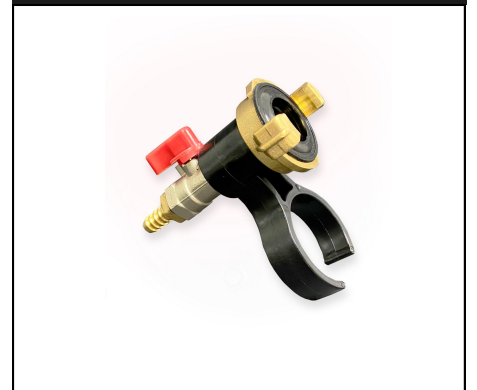
CODE: PST00040



SPRAY GUN BRACKET

- Stabilizing Bracket for Spray Gun

CODE: PST0041



S. GUN VALVE SYSTEM.

- Spray gun valve system set

POWERMIX PLASTERING MACHINES

CODE: PST0042



BLOWING PIPE

- Stainless blowing pipe for plaster spraying gun, 10 mm Ø

CODE: PST0043



SPRAY GUN Q BOLT

- For stabilizing spraying gun, Metric 8

CODE: DBO0046



FLOW METER

- PVC Red or white colors available
- 150-1500 lt/min

CODE: DBO0047



FLOW METER PIPE

- PVC
- 150-1500 lt/min

CODE: DBO0048



PLUMB BOB

- Stainless Steel
- Aluminum

CODE: DBO0049



FLOW METER NUT

- PVC
- Red & White colors available

CODE: DBO0050



FLOW METER RING

- Used for stabilizing Flow Meter
- Galvanized

CODE: DBO0051



VALVE FOR FLOW METER

- Valve for Adjusting water level
- 6 Turns

CODE: DBO0052



VALVE FOR FLOW METER

- Valve for Adjusting water level
- 11 Turns

POWERMIX PLASTERING MACHINES

CODE: HOR0047



SPONGE BALL

- 25mm Ø
- 30mm Ø
- 35mm Ø
- 50mm Ø

CODE: HOR0048



PLASTER HOSE SEAL

- 25mm Ø
- 35mm Ø
- 50mm Ø

CODE: HOR0049



AIR HOSE

- Corded, 3/8
- 11 meters
- 16 meters

CODE: HOR0050



WATER HOSE

- Corded, 3/4
- 10 meters
- 20 meters

CODE: HOR0051



PLASTER HOSE

- 10m, 25mm,40bar
- 15m, 25mm,40bar
- 13,3m, 35mm,40bar

CODE: HOR0052



AIR GUN

- Used for machine cleaning

CODE: HOR0053



HOSE SOCKET

- 25 mm Ø
- 35 mm Ø

CODE: HOR0054



HOSE CLIP

- 25x27mm
- 37x40mm

CODE: HOR0055

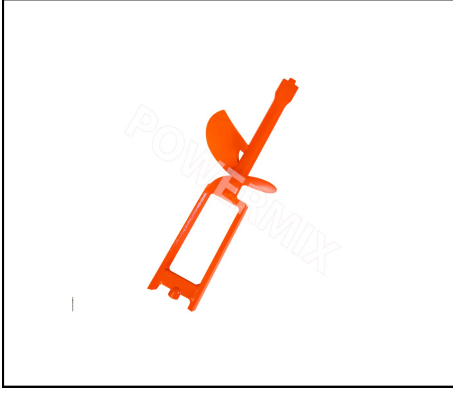


CYBANT

- 13x16mm
- 25x27mm

POWERMIX PLASTERING MACHINES

CODE: SKA0049



MIXING SHAFT LIGHT

- Special design for plastering insulation materials

CODE: SKA0050



MIXING SHAFT ECO

- Compatible with compact 220V compact plastering machines

CODE: SKA0051



MIXING SHAFT PM

- Standard mixing shaft compatible with 380V Putzmeister machines

CODE: SKA0052



MIXING SHAFT STANDARD

- Standard mixing shaft compatible with 380V Machines

CODE: SKA0059



MIXING SHAFT FORGED

- Forged mixing shaft compatible with 380V Machines

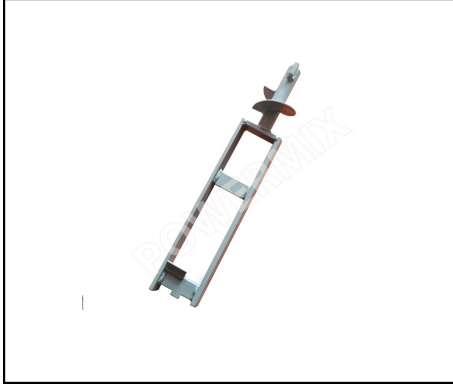
CODE: SKA0060



MIXING SHAFT MXR

- Special design, compatible with 380V Machines

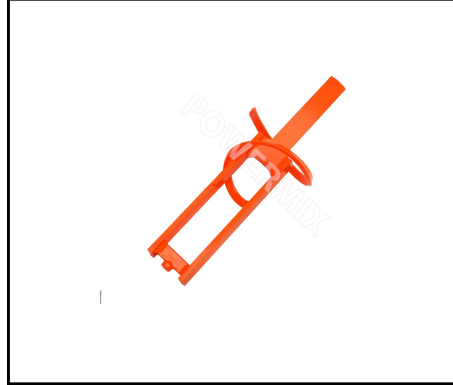
CODE: SKA0061



MIXING SHAFT ESP

- Special design, compatible with 380V Machines

CODE: SKA0062



MIXING SHAFT BIO

- Special design, compatible with 380V Machines

CODE: SKA0063



MIXING SHAFT KLT

- Special design, compatible with 380V Machines

POWERMIX PLASTERING MACHINES

CODE: SKA0046



MOTOR COUPLING BIO

- 25 mm Ø

CODE: SKA0047



MOTOR COUPLING KLT

- 25 mm Ø

CODE: SKA0048



MOTOR COUPLING 30MM

- 30mm Ø

CODE: SKA0053



MOTOR COUPLING 25MM

- Casted
- Steel

CODE: SKA0054



CLEANING CHAMBER

- Standard
- Eco

CODE: SKA0055



CLEANING SHAFTS

- Standard
- Eco
- PM Style

CODE: SKA0056



CLEANING CHAMBER(PM)

- PM style

CODE: SKA0057



MOTOR COUPLING PROTEC.

- Motor Coupling Protection Part

CODE: CLK0001



CAMLOCK COUPLING

- 25mm Ø diameter,

POWERMIX PLASTERING MACHINES

CODE: CLK0002



CAMLOCK COUPLING

- 35mm Ø diameter,

CODE: CLK0003



CAMLOCK COUPLING

- 50mm Ø diameter,

CODE: CLK0004



SAFETY CLIP OF COUPLING

- Cam lock of coupling

CODE: CLK0005



SAFETY CLIP PIN

- Pin for camlock coupling

CODE: CLK0006



CLEANING COUPLING 25MM

- Cleaning coupling 25mm Ø

CODE: CLK0007



CLEANING COUPLING 35MM

- Cleaning coupling 35mm Ø

CODE: KAP0053



GUN REDUCTION PLASTIC

- 35mm Ø

CODE: KAP0054



GUN REDUCTION STEEL

- 25mm Ø
- 35mm Ø

CODE: KAP0055



ROTATING HEAD

- Spraying gun rotating head
- Aluminum, 25 mm Ø

POWERMIX PLASTERING MACHINES

CODE: KAP0056



BOTTOM FLANGE

- 1.25" 1/1

CODE: KAP0057



HOSE STEM REDUCTION

- 25 mm Ø
- 35 mm Ø
- 50 mm Ø

CODE: KAP0058



HOSE STEM MALE

- 25 mm Ø
- 35 mm Ø
- 50 mm Ø

CODE: KAP0059



REDUCER

- 25/35 mm Ø
- 35/50 mm Ø

CODE: KAP0060



CLAW COUPLING TAIL 3/4"

- Brass, 3/4"

CODE: KAP0061



CLAW COUPLING 1"

- Brass, 1"
- with interior pass

CODE: KAP0062



CLAW COUPLING 1/2"

- Brass, 1/2"
- with exterior pass

CODE: KAP0063



CLAW COUPLING 1/2"

- Brass, 1/2"
- with interior pass

CODE: KAP0064



CLAW COUPLING TAIL 3/8"

- Brass, 3/8"

POWERMIX PLASTERING MACHINES

CODE: KAP0065



BLIND END CAP

- Brass

CODE: KAP0066



CLAW COUPLING 1"

- Brass, 1"
- with exterior pass

CODE: KAP0067



PRES. REGULATOR LID

- Brass

CODE: KAP0068



CLAW COUPLING 3/4"

- Brass, 3/4"
- with exterior pass

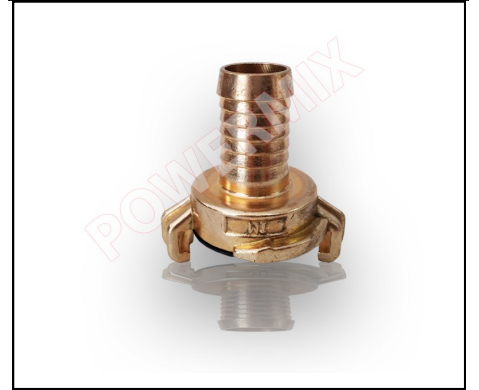
CODE: KAP0069



CLAW COUPLING 3/4"

- Brass, 3/4"
- with interior pass

CODE: KAP0070



CLAW COUPLING TAIL 1"

- Brass, 1"
-

CODE: KAP0071



CLAW COUPLING TAIL 1/2"

- Brass, 1/2"

CODE: KAP0072



ROTATING COUPLING 1"

- Brass 1"

CODE: KAP0073



CLAW COUPLING SEAL

- Rubber

POWERMIX PLASTERING MACHINES

CODE: SUP0009



WATER PUMP 230V

- 230 Volt, 0.37 kW - 0.5hp
- PENTAX made in Italy

CODE: SUP0010



WATER PUMP PMT45

- 400 Volt, 0.37 kW - 0.5hp
- PENTAX made in Italy

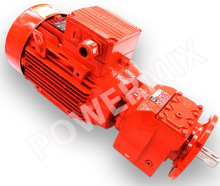
CODE: SUP0011



WATER PUMP PMT80

- 400 Volt, 0.75 kW - 1.0hp
- PENTAX made in Italy

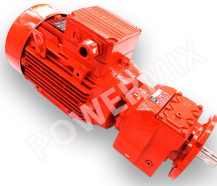
CODE: MIM0006



MIXER TOP MOTOR 2.2 kW

- 2.2kW, 400 Volt, 3Phase
- YILMAZ REDUKTOR TURKEY

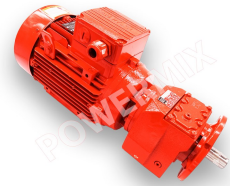
CODE: MIM0007



MIXER TOP MOTOR 4 kW

- 4.0kW, 400 Volt, 3Phase
- YILMAZ REDUKTOR TURKEY

CODE: MIM0008



MIXER TOP MOTOR 5.5 kW

- 5.5kW, 400 Volt, 3Phase
- YILMAZ REDUKTOR TURKEY

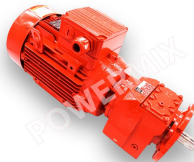
CODE: MIM0009



MIXER TOP MOTOR NORD

- 5.5 kW, 400 Volt, 3Phase
- NORD MOTOR GERMANY

CODE: MIM0010



MIXER TOP MOTOR 7.5kW

- 7.5kW, 400 Volt, 3Phase
- YILMAZ REDUKTOR TURKEY

CODE: MIM0011



GEARBOX 5.5kW

- 5.5kW, 400Volt, 3Phase
- YILMAZ REDUKTOR TURKEY

POWERMIX PLASTERING MACHINES

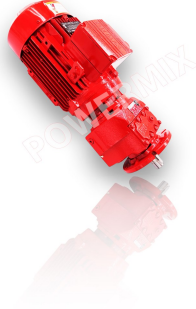
CODE: MIM0012



GEARBOX 7.5kW

- 7.5kW, 400Volt, 3Phase
- YILMAZ REDUKTOR TURKEY

CODE: TAM0010



WHEEL DRIVE MOTOR

- 400 Volt, 0.55 kW 28rpm/min
- YILMAZ REDUKTOR TURKEY

CODE: TAM0013



DRIVE MOTOR GEARBOX

- 0.55kW, 400 Volt, 3Phase
- YILMAZ REDUKTOR TURKEY

CODE: MTM0029



PUMP UNIT FLANGE ECO

- Casted tool steel
- Compatible with ECO

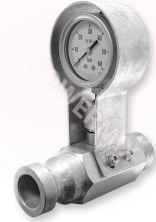
CODE: MTM0030



PUMP UNIT FLANGE

- Casted tool steel
- Compatible all type of machines

CODE: MTM0031



PRESSURE GAUGE

- Bottom Flange with Pressure Gauge

CODE: SPA0001



TIE RODS

- Tie rods for stabilizing pump unit with bottom flange

CODE: TKR0087



MACHINE WHEEL STANDARD

- Diameter 23x8cm
- Standard without brake
- Without brake

CODE: TKR0088



MACHINE WHEEL+BRAKE

- Diameter 23x8cm
- With brake
- Without brake

POWERMIX PLASTERING MACHINES

CODE: BAS0010



MANOMETER

- Manometer with bottom screw
- 10 bar and 16 bar is available

CODE: BAS0011



MANOMETER

- Manometer with back screw
- 10 bar and 16 bar is available

CODE: BAS0012



MANOMETER COVER

- Manometer protection cover
- Rubber

CODE: STP0099



MACHINE SPANNER

- Spanner for plaster machine

CODE: SUP0012



WATER PUMP FILTER

- Filter for water pump

CODE: MIX0001



MIXER MOTOR HOLDER

- Mixer Motor Holder

CODE: MIX0002



MIXING TUBE

- Mixing tube

CODE: MIX0003



MIXING TUBE GASKET

- Rubber

CODE: MIX0004



TUBE STABILIZING PIN

- Mixing tube stabilizing pin

POWERMIX PLASTERING MACHINES

CODE: MIX0005



MOUNT LOCK

- Mount lock for mixer motor
- Casted, With locking handle

CODE: FTR0001



FEEDING TRAY

- Original design with high quality

CODE: FTR0002



Q RING NUT

- Nut for stabilizing feeding tray
- Metric 16

CODE: STR0001



STAR WHEEL

- Star wheel

CODE: STR0002



DUST PROTECTION PLATE

- Dust protection plate for star wheel

CODE: STR0003



STAR WHEEL NUT

- Star Wheel Nut

CODE: STR0004



DUST PLATE PIN

- 6mm

CODE: IJH0001



INJECTION HOOD&FILTER

- Injection Hood with Filter

CODE: IJH0002



LEVEL GAUGE

- 42V, 32A
- MADE IN ITALY

POWERMIX PLASTERING MACHINES

CODE: VAL1004



SOLENOID VALVE 230V

- 1/2" TORK
- 24 Volt or 42 Volt

CODE: VAL1005



SOLENOID VALVE TORK

- 1/2" TORK
- 24 Volt or 42 Volt

CODE: REG1003



REGULATOR LID PLASTIC

- Plastic
- Including rubber seal gasket

CODE: REG1004



PRESSURE REGULATOR

- 1.5-6 bar, DN 15, 1/2"
- Made in Germany

CODE: REG1005



PRESSURE REG. FILTER

- Pressure Reducer Filter
- 0.16mm R=1/2 + 3/4"

CODE: TEM0102



NOZZLE CLEANER

- Width: 5.0 mm Length: 265 mm
- Made in Germany

CODE: BEST0001



MOULD RELEAS SPRAY

- Used for assembling stator

CODE: FRC0001



WET BRUSH FOR PLASTER

- Wet Brus for plastering
- PVC handle

Price: 2,30 €

CODE: TEM0103



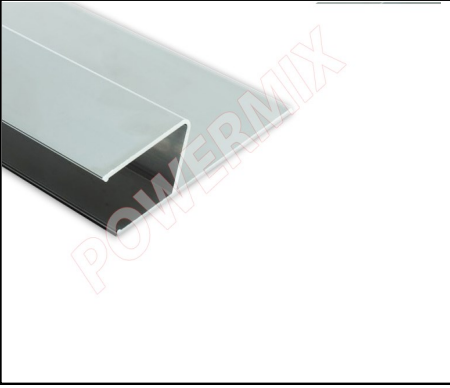
CLEANING BRUSH

- Cleaning brush for machine
- PVC handle

Price: 1,10 €

POWERMIX PLASTERING MACHINES

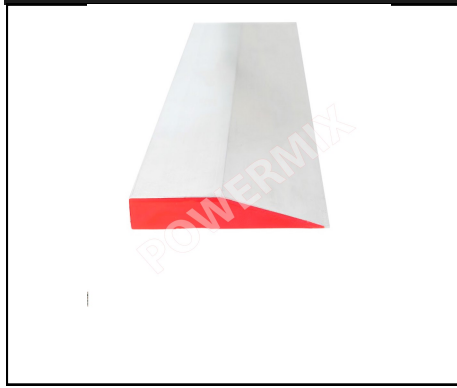
CODE: MAS0084



H SHAPE STRAITH EDGE

- Aluminum
- 1/1,5/2/2,5/3/5/6 meters

CODE: MAS0085



BEVELLED STRAITH EDGE

- Aluminum
- 1/1,5/2/2,5/3/5/6 meters

CODE: MAS0086



BOX EDGE

- Aluminum, 32X70 mm
- 2,5/3/5/6 meters

CODE: MAL00087



SPATTLE FOR STUCCO

- 20cm Plastic or Wooden handle
- DEKOR TOOLS

CODE: MAL0088



RUBBER TROWEL

- Rubber
- DEKOR TOOLS

CODE: MAL0089



FINISHING TROWEL

- PVC handle. 35CM
- DEKOR TOOLS

CODE: MAL0090



INTERIOR CORNER TROWEL

- Wooden handle, Stainless Steel
- DEKOR TOOLS

CODE: MAL0091



BRICK LAYING TROWEL

- Plastic or Wooden Handle
- DEKOR TOOLS

CODE: MAL0092



PLASTERING HAWK

- 36x44cm Plastering hawk PVC
- DEKOR TOOLS

POWERMIX PLASTERING MACHINES

CODE: MAL0093



GROUND SCRAPER

- 20cm, Ground Scraper
- DEKOR TOOLS

CODE: MAL0094



FACADE SPATTLE

- 40/50/60cm, Wooden handle
- Ergonomic design
- DEKOR TOOLS

CODE: MAL0095



STUCCO SPATTLE

- 14cm, PVC handle
- Ergonomic design
- DEKOR TOOLS

CODE: MAL0096



CLEANING SPATTLE

- 5cm, PVC handle
-

CODE: MAL0097



SCRAPER FLOAT

- 25cm long with wooden handle
- DEKOR TOOLS

CODE: MAL0098

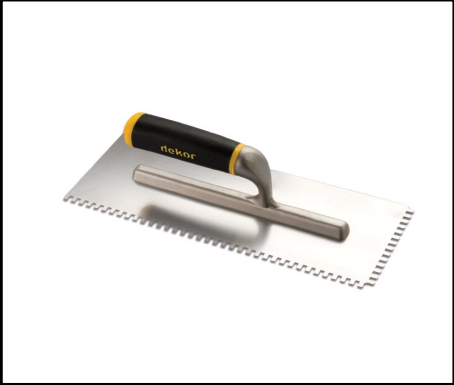


PLASTIC FINISHING TROWEL

- 28cm long with PVC handle
- DEKOR TOOLS

Price: 2,50 €

CODE: MAL0099



NOTCHED TILER TROWEL

- 6x6mm notches, 12x30cm
- DEKOR TOOLS

Price: 3,60 €

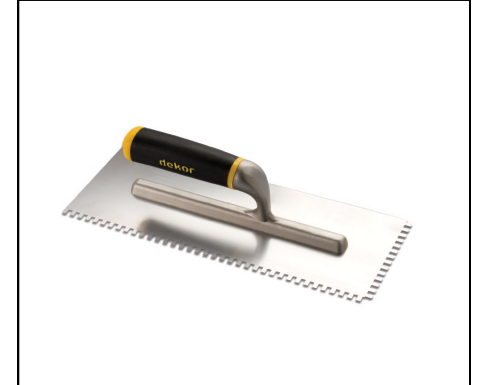
CODE: MAL0100



NOTCHED TILER TROWEL

- 8x8mm notches, 12x30cm
- DEKOR TOOLS

CODE: MAL0101



NOTCHED TILER ROWEL

- 10x10mm notches, 12x30cm
- DEKOR TOOLS

POWERMIX PLASTERING MACHINES

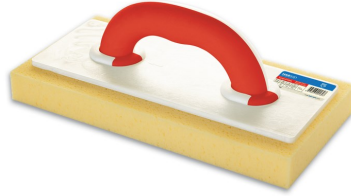
CODE: MAL0102



NOTCHED TILER TROWEL

- 12x12mm notches, 12x30cm
- DEKOR TOOLS

CODE: MAL0103



SPONGE TROWEL

- 14x28cm with plastic handle
- DEKOR TOOLS

CODE: MAL0104



JOINT TROWEL SOFT GRIP

- 16cm size
- PVC or Wooden Handle
- DEKOR TOOLS

CODE: MAL0105



GROUTING TROWEL

- 16cm size
- PVC or Wooden Handle
- DEKOR TOOLS

CODE: MAL0106



ANGLE TROWEL

- 9cm SST, Wooden Handle
- DEKOR TOOLS

CODE: MAL0107



CURVED HANDLE SPATTLE

- 50cm, PVC handle
- Ergonomic design
- DEKOR TOOLS Price: 4,65

CODE: MAL0108



PLASTER SCRAPER

- 35cm PVC handle
- DEKOR TOOLS

Price: 3,20 €

CODE: MAL0109



CLEANING SPONGE

- 20cm
- DEKOR TOOLS

CODE: ALE0001



WALL ANGLE PLANE

- 8 cutting edges, Aluminum

POWERMIX
Plastering Machines & Rotor Stator Systems

Phone : + 7 923 600 66 22

Email : info@aspro-sib.ru

Website : https://aspro-sib.ru